



EMC Amplifier Control Panel Installation Instructions

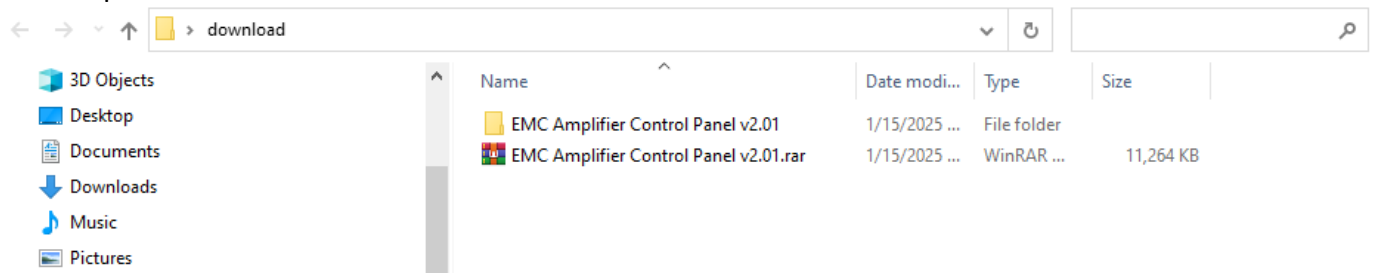
2025.01 v2.01

Contents

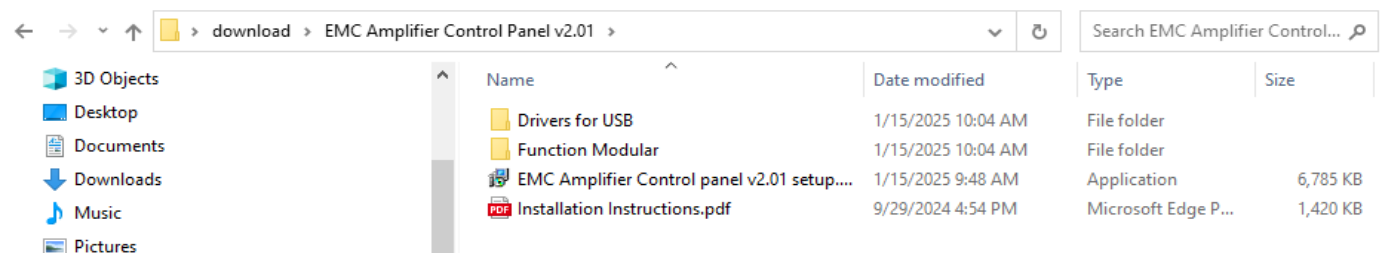
1.	Download “Setup & Driver” file.....	2
2.	Program Installation	3
3.	Driver Installation:	5
4.	Device Testing	8
	I. Double click executable file “EMC Amplifier Control Panel.exe”.....	8
	II. Use serial port assistant.	10
	III. Use ethernet port assistant.	10

1. Download “Setup & Driver” file.

1.1 Download file “EMC Amplifier Control Panel v2.01” from our website: <http://www.qotana.com/>, and decompress it:



1.2 Open the folder and there will be four files. The first one is the Driver Program for Windows OS, the second one is the function modules for Labview(vi) and .Net platform(dll), the third one is the executable Installation Program , and the last one is the Installation Instructions(pdf).

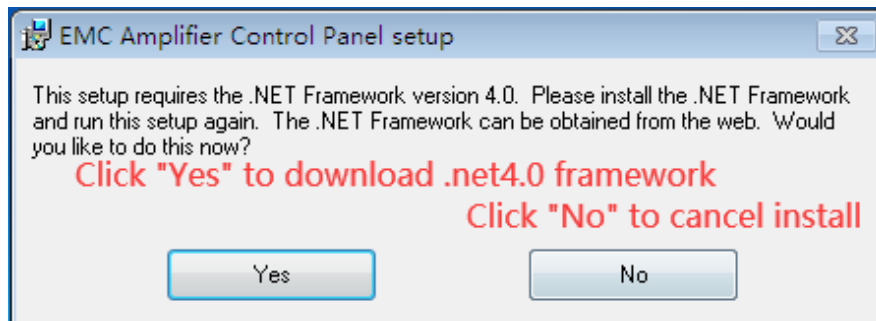


2. Program Installation

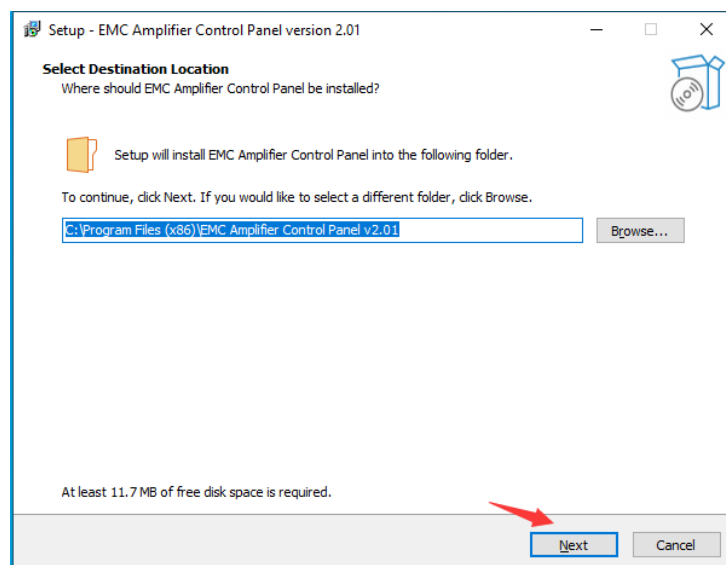
2.1 Double click the “EMC Amplifier Control Panel v2.01 setup.exe” file to start the installation:

There will be two cases when you start installation:

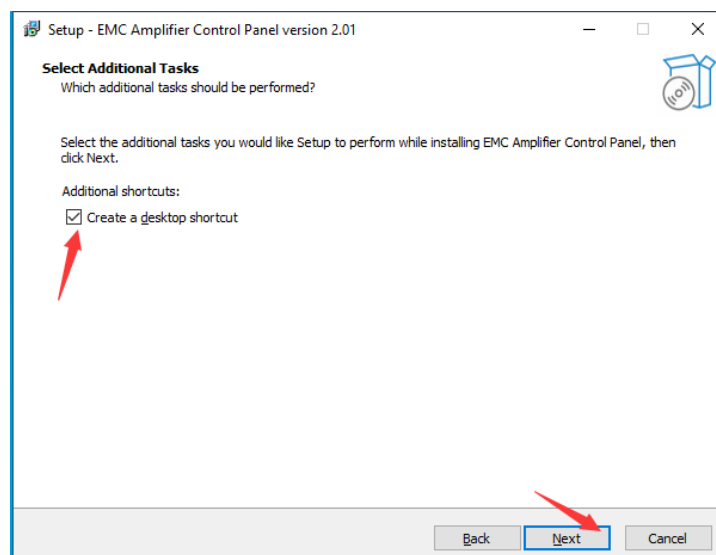
- (1) If your computer does not have .Net 4.0 Framework or higher, there will be a pop out window showing below, and you must click “Yes” to download and install the Framework first; otherwise, the EMC Amplifier Control Panel setup cannot be processed.



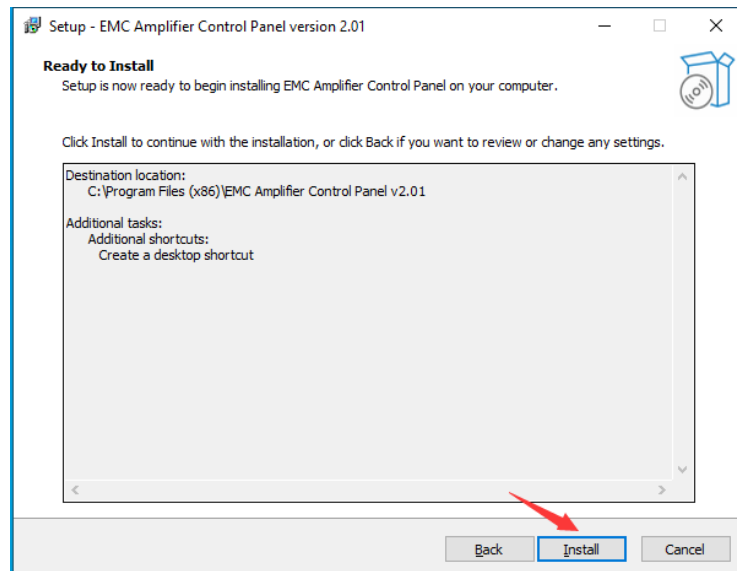
- (2) If your computer has installed .Net 4.0 Framework or higher, the “setup 2.01” will open an installation page as shown below.



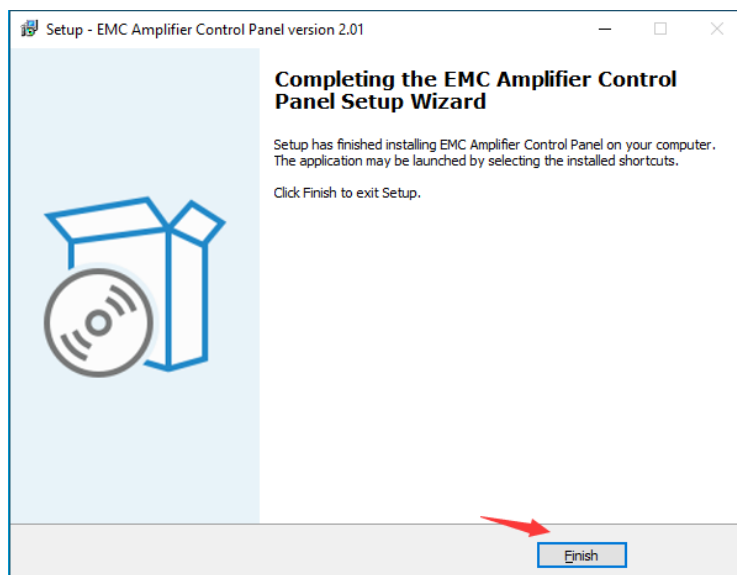
2.2 Click “Next” and Check “Create a desktop shortcut”:



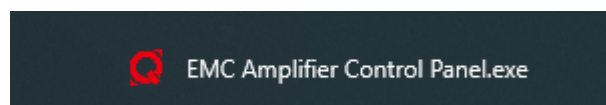
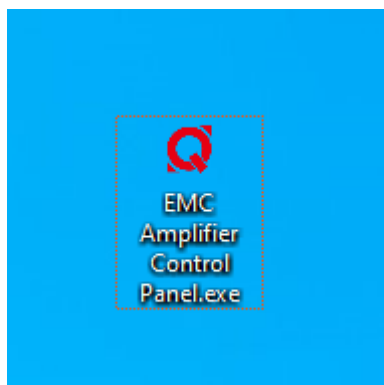
2.3 Click “Install”:



2.4 Click “Finish” to finish the installation for EMC Amplifier Control Panel v2.01.

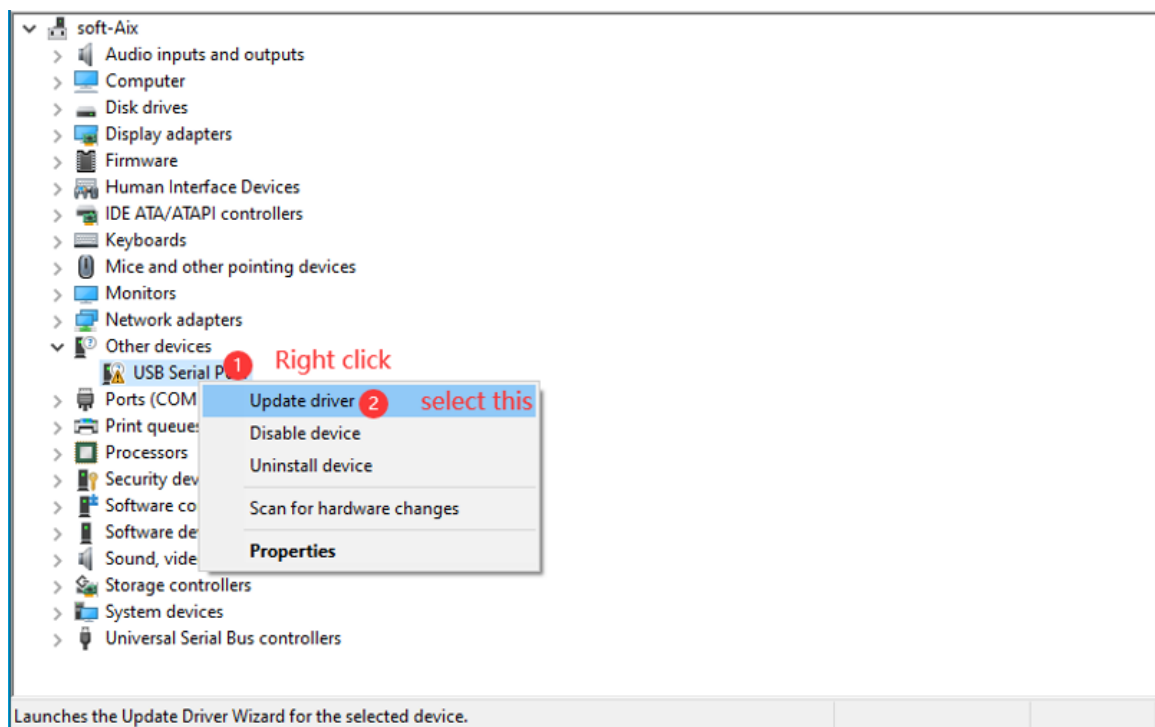


2.5 After the installation, it will create a shortcut on desktop and start menu as shown below.

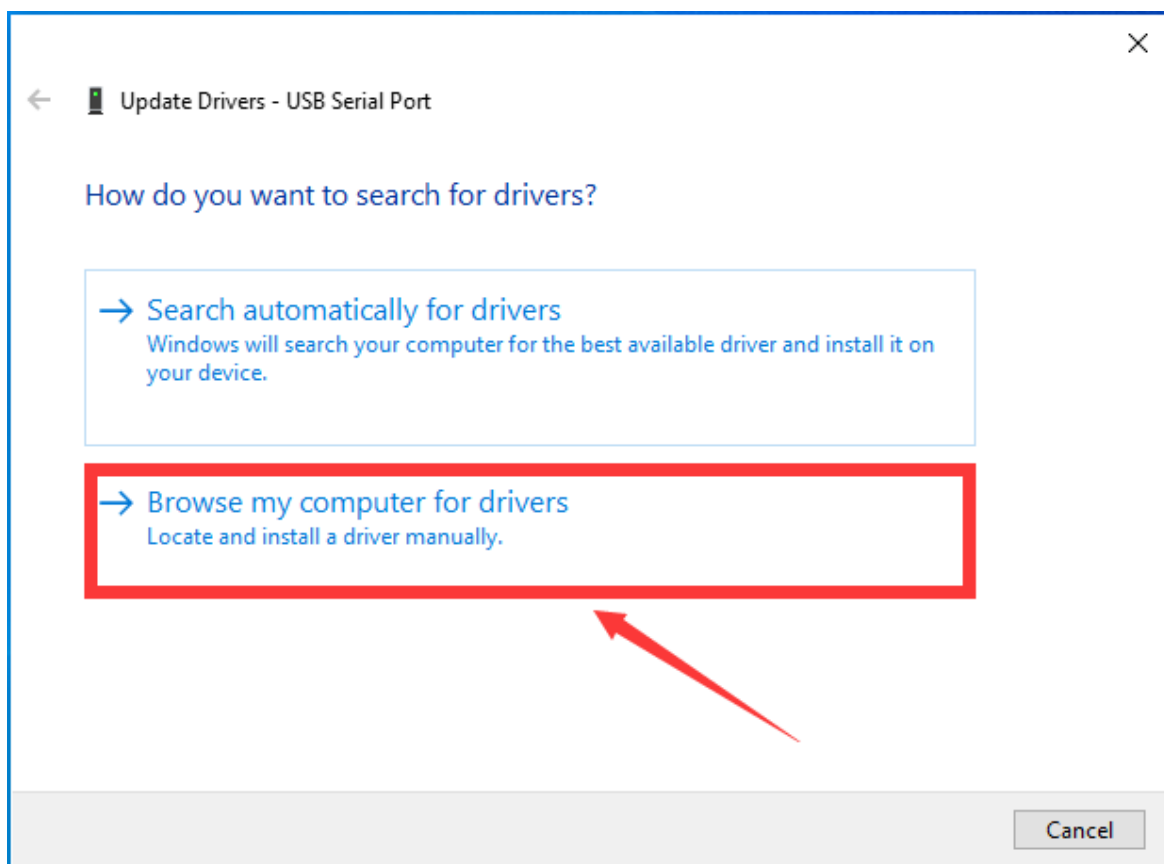


3. Driver Installation:

- I. Connect the device on the USB port, and then find the device under “Device Manager”. Right-click it and choose “Update Driver Software”.

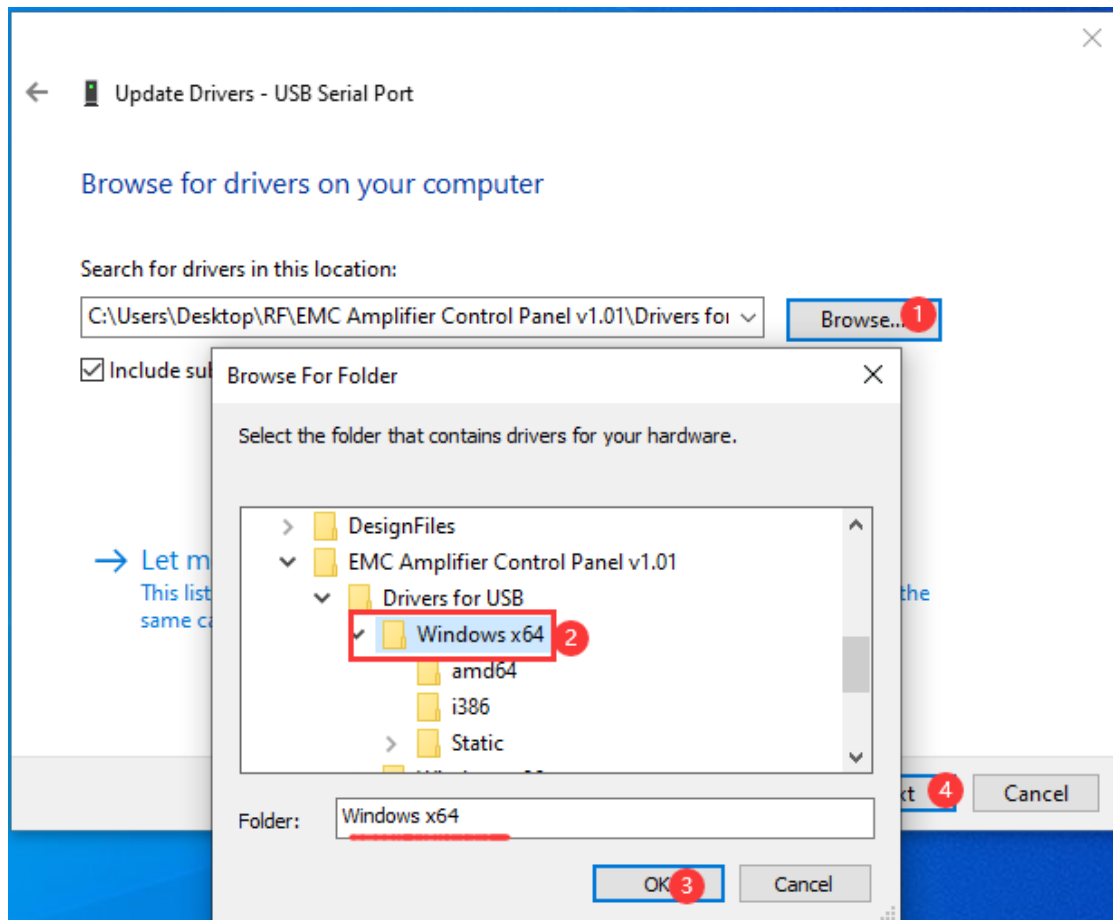


- II. Select “Browse my computer for driver software”.

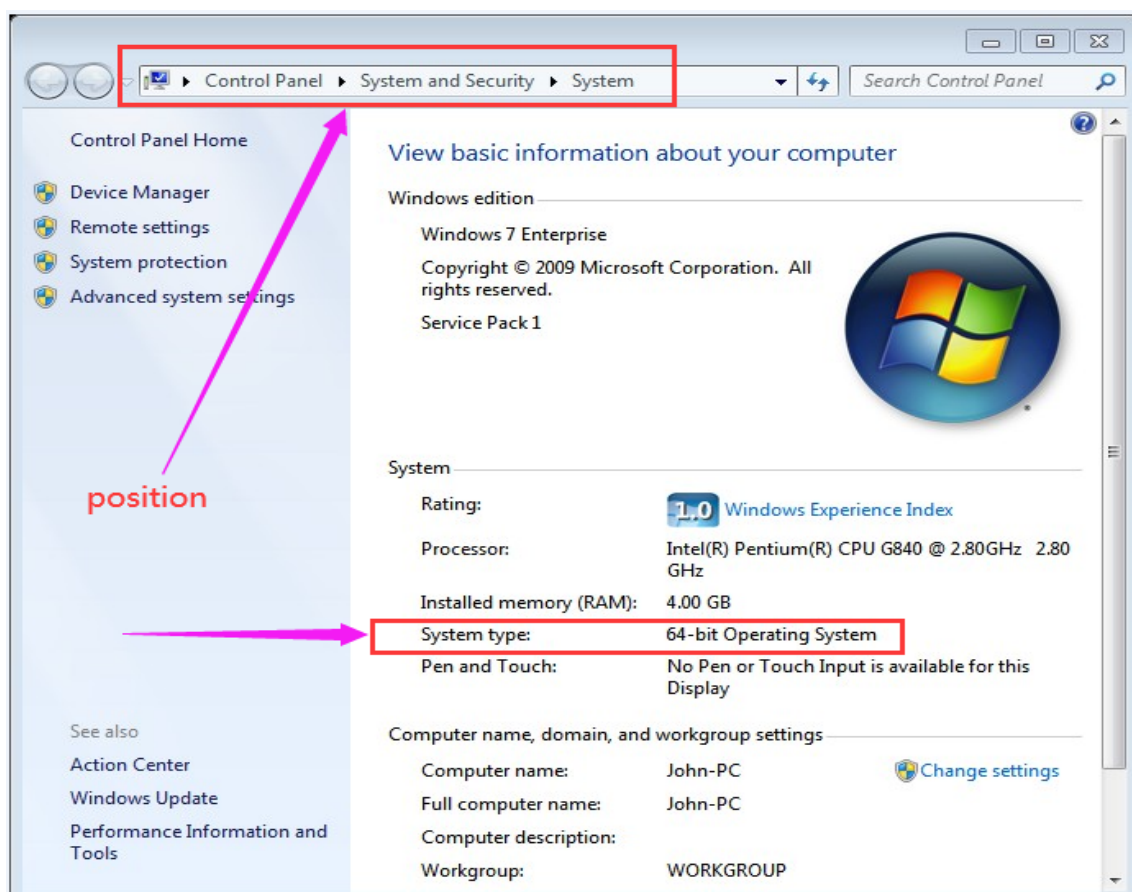


III. Find the Driver Program under “Drivers for USB”.

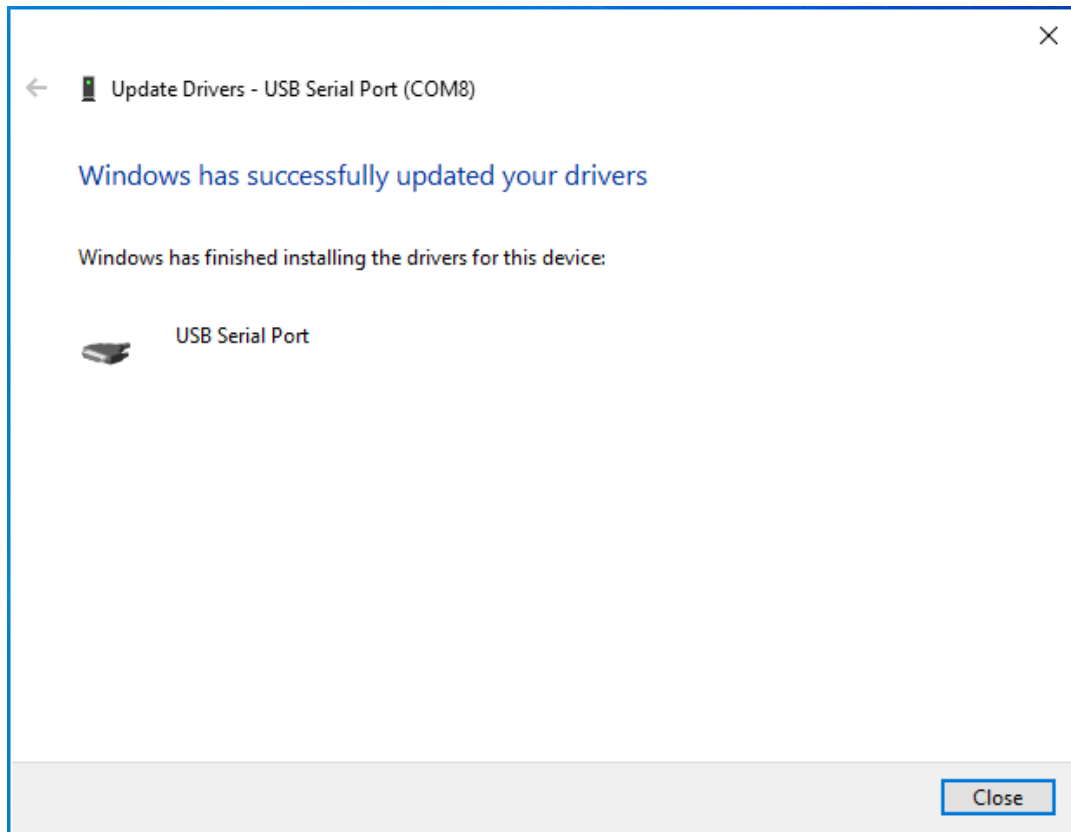
Notes: Select “Windows x64” folder if your system type is Windows 64-bit OS; otherwise, select the 'Windows x86'.



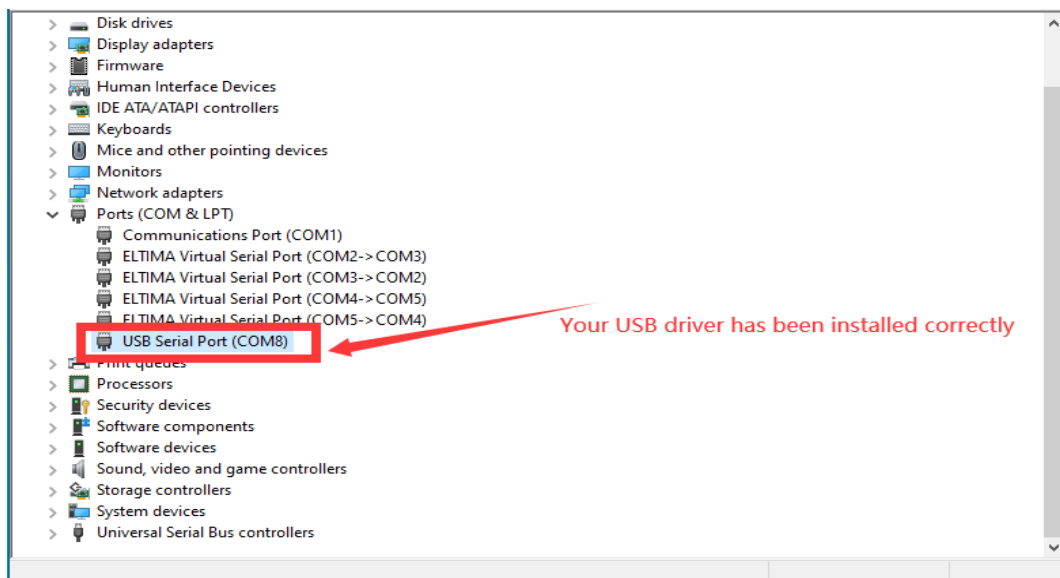
*This is how you find out your OS system information.



IV. Installation completed.



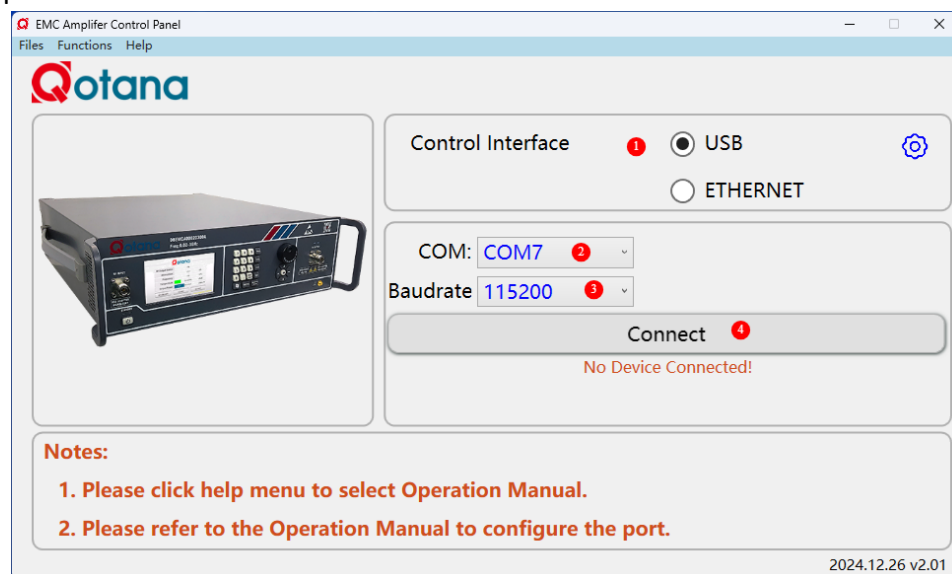
V. After those steps, you can find the “USB Serial Port (COM*)” under “Ports (COM & LPT)”.



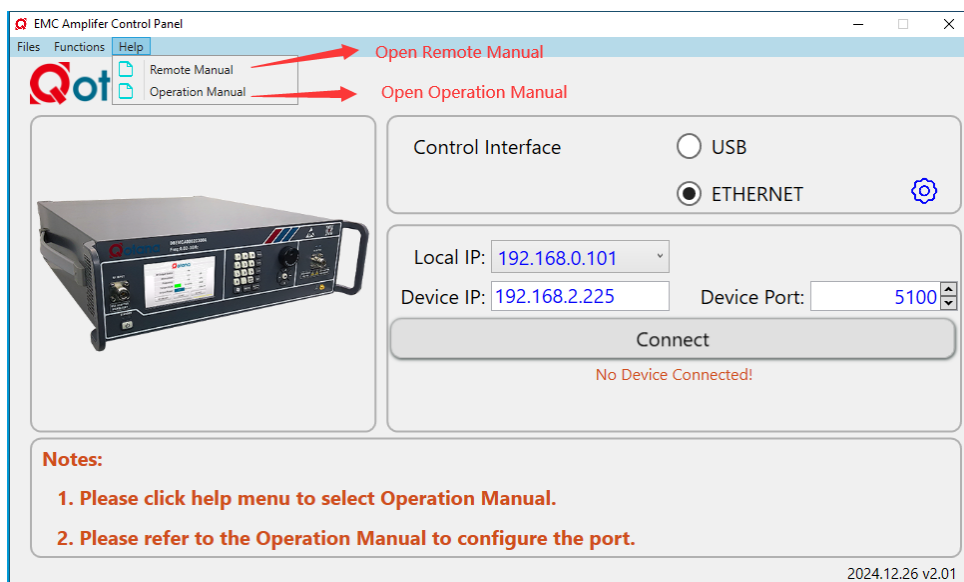
4. Device Testing

I. Double click executable file “EMC Amplifier Control Panel.exe”.

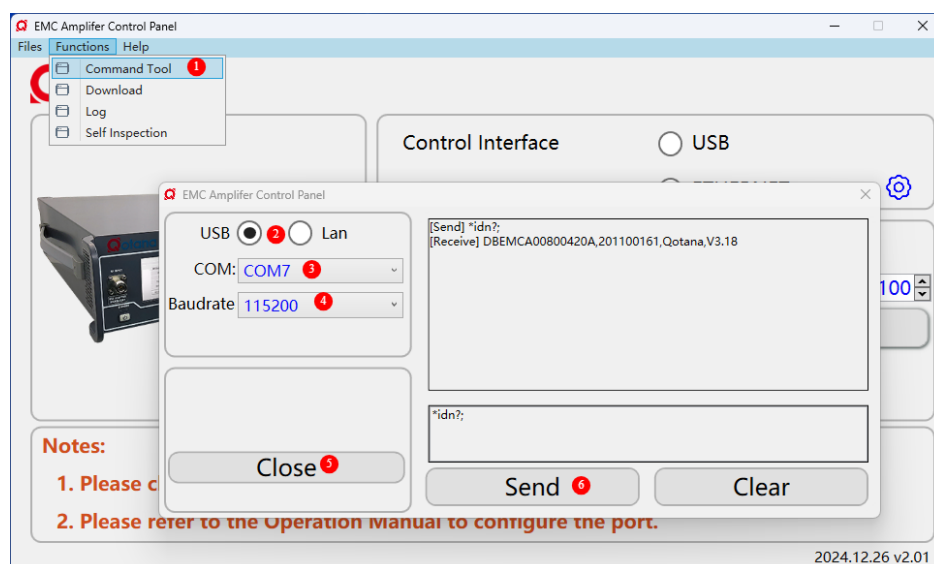
A. Main panel



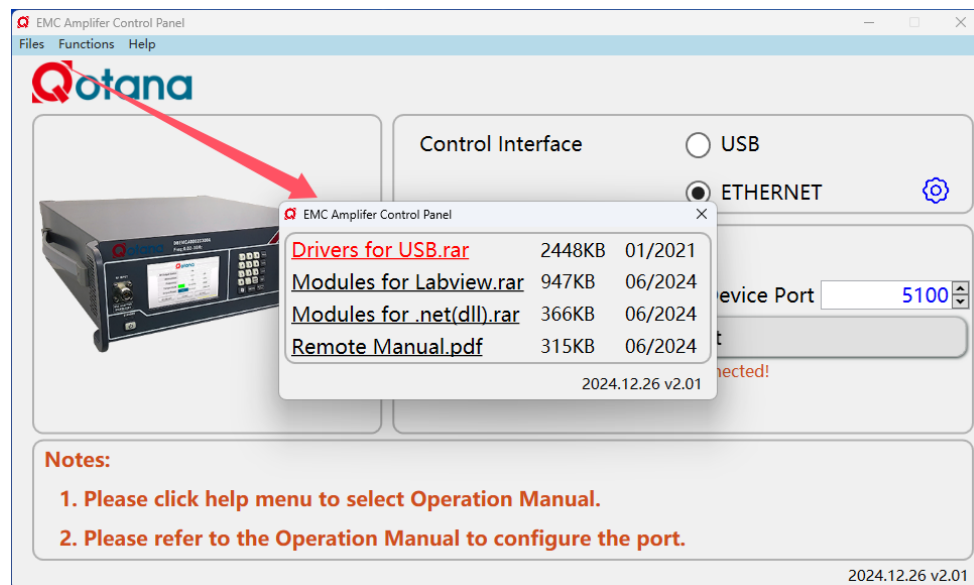
B. Help function



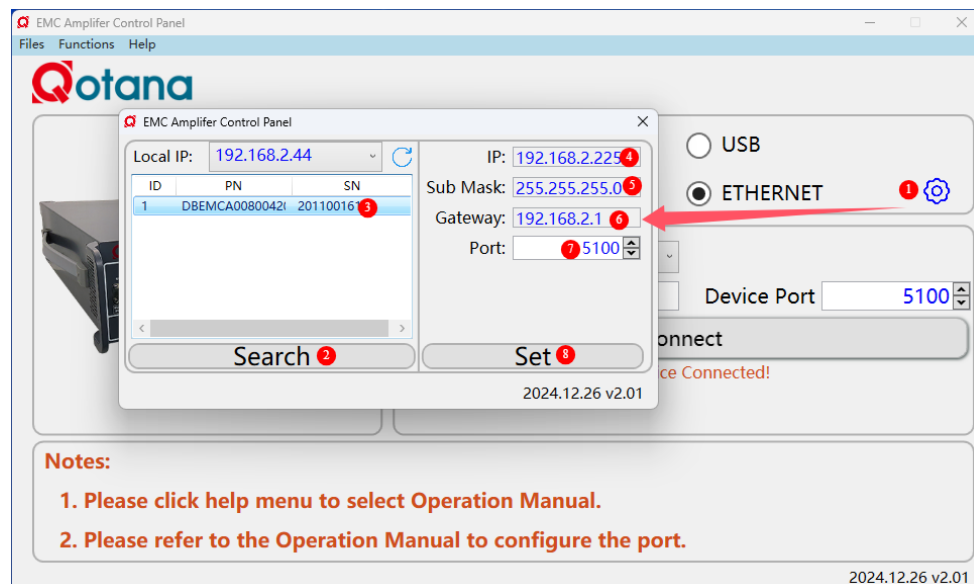
C. Command tool



D. Download files.

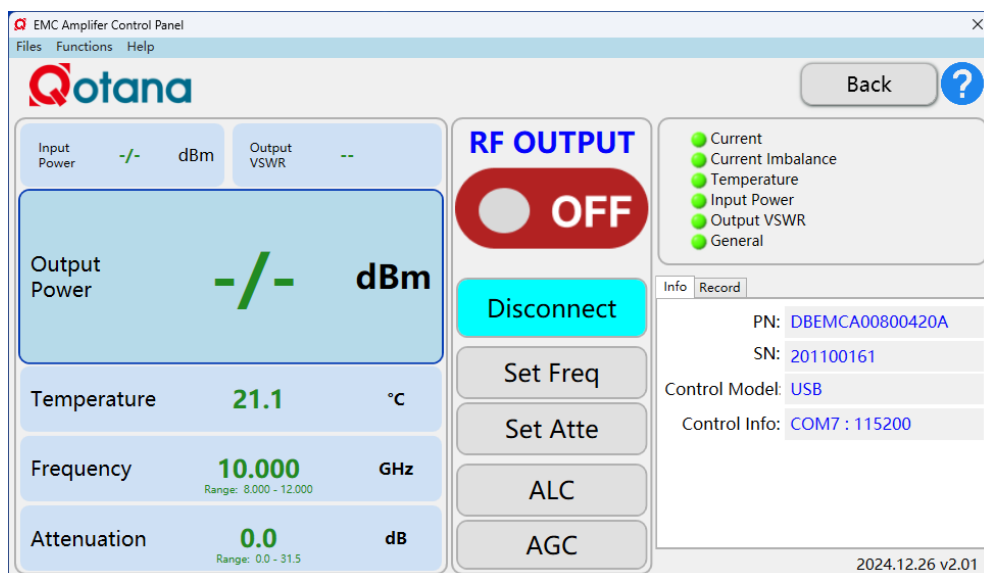


E. Modify the IP address

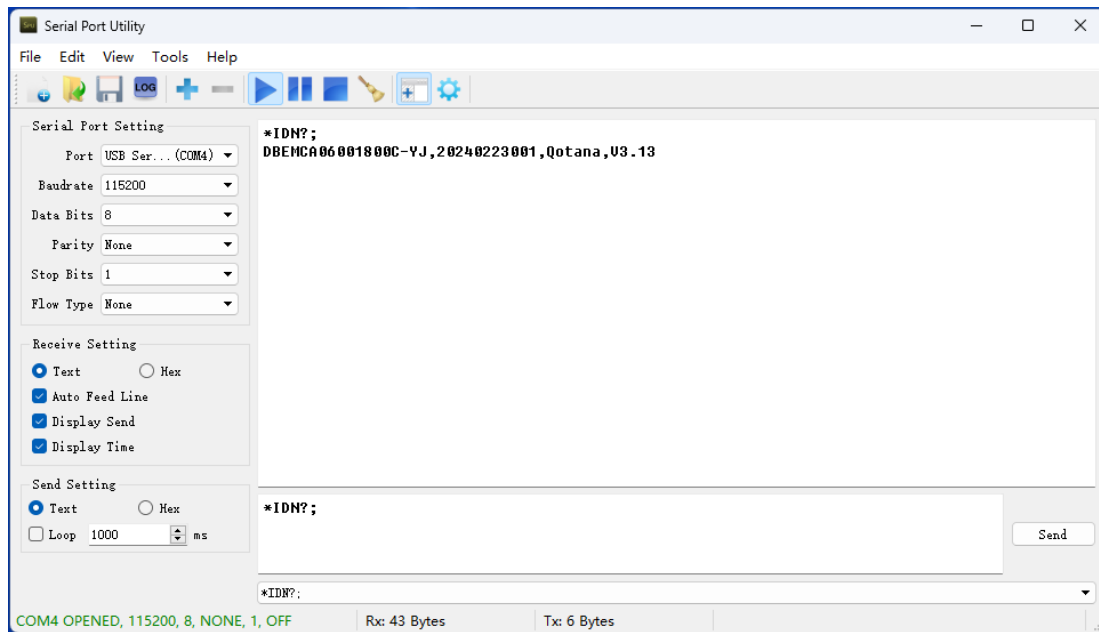


F. Others: Please reference the “Help” function in “EMC Amplifier Control Panel”.

G. EMC Benchtop Amplifier control panel



II. Use serial port assistant.



III. Use ethernet port assistant.

